

The information contained in this drawing is the sole property of CWS Coil Winding Specialist. Any reproduction in part or whole without written permission of CWS Coil Winding Specialist is prohibited.

REVISION HISTORY

REV	ECN	DESCRIPTION	SIGN & DATE			
			BY	DATE	CHK	DATE
C		PRODUCTION RELEASE	TDK	12/07/04	JLAU	12/07/04
D		REVISED DIMENSION AS SAME AS K63XXXXX38-A01	RL	12/4/06	JLAU	12/4/06
E		ADDED NOTE #8, 9, 10, AND 11	KLC	9/23/08	RL	9/23/08
G		UPDATED	RCL	7/7/11	JLAU	7/7/11

11 BUILD TO RoHS COMPLIANCE AND LEAD FREE

OR OVEN CURED AS REQUIRED

10 DIP-VANISH WITH AC43 OR EQUAL AND AIR DRY

9 THIS IS CRITICAL MAXIMUM DIMENSION

8 BOTTOM OF CORE TO START OF TINNING
6.5±0.5 MM DIMENSION MEASURED FROM

7 TOP OF CORE TO START OF TINNING
13.5 MM DIMENSION MEASURED FROM

6 USING A PERMANENT MARKING METHOD
MARK PART NUMBER AND REVISION
WRAP INDUCTOR WITH TAPE, (PER NOTE 2)

5 TO THE CORE
MUST REST FLAT ON PCB). LEADS MUST BE TANGENT
FLUSH WITH THE COIL EDGE, AS SHOWN (I.E. COIL
REMOVE INSULATION AND TIN LEADS 7.0 MM MIN

4 SIDE OF CORE AND EVENLY SPACED, POLARITY NOTED
WIND 4 TURNS, .091x .182 RECT. SINGLE LAYER ON EACH
CONSTRUCTION:

TO INSURE INTERGRITY OF WINDING SEPARATION
HI-POT TEST FOR INTERWINDING ISOLATION= 250VDC
POWER LOSS= 5.2 W MAX.@ 90A/COIL
DCR= .40 mOHMS MAX./COIL
L= 52 uH MIN / COIL, 70 uH NOM / COIL, 1 KHZ, 1Vrms

3 SPECIFICATIONS @ 25 °C:

APPROVED PART

OUTER WRAP: 3M #11 OR #69 OR OTHER CWS

WIRE: UL RECOGNIZED 200°C RATING MAGNET WIRE

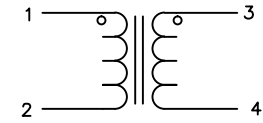
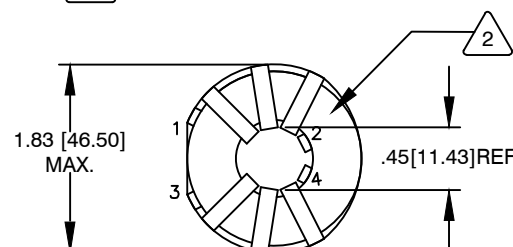
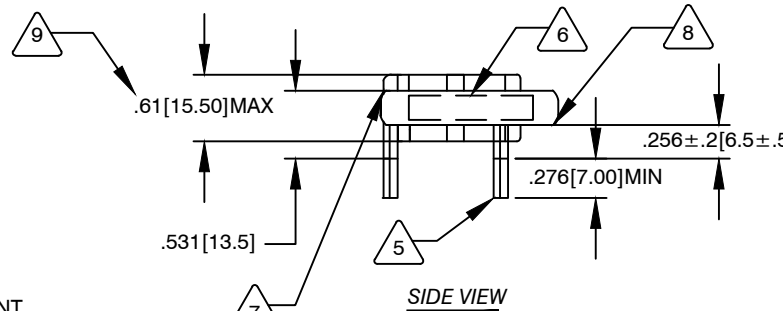
CWS BYTEMARK OR OTHER APPROVED PART

2 CORE: RATED 6000 VOLT FERRITE TOROID INSULATION, HIGH PERM MNZN

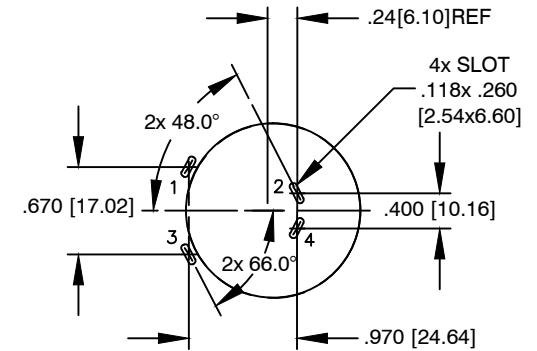
CLASS B (130°C) REQUIRED

1 MATERIAL: UL RECOGNIZED 94V-0 FOR FLAMMABILITY

NOTES: UNLESS OTHERWISE SPECIFIED, READ FROM BOTTOM UP



SCHEMATIC



MOUNTING HOLES PATTERN

UNLESS OTHERWISE SPECIFIED
DIMENSIONING AND TOLERANCE PER ANSI Y14.5M
ALL DIMENSIONS ARE IN INCHES AND [MILLIMETERS].
TOLERANCE INCHES:
.XXX=±.010 .XX=±.020 $\angle = \pm 0^{\circ}30'$
TOLERANCE METRICS:
.XXX=±.254 .XX=±.51 $\angle = \pm 0^{\circ}30'$
ANGLE PROJECTION
DO NOT SCALE DRAWING

QTY	CODE IDENT	MFG. P/N	DESCRIPTION	ITEM NO.
PARTS LIST				
AUTOCAD		X		
SOLIDWORKS				
SIGN		DATE		
DRAWN	TDK	12/04/06		
CHECKED	JLAU	12/04/06		
ENGR.	KSUM	12/04/06		
APPR.	JLAU	12/04/06		
			COILWS COM, INC www.coilws.com CWS Coil Winding Specialist. 353 W Grove Ave Orange, CA. 92865	
TITLE: Inductor Common Mode 70uH 90A				
SIZE	DWG. NO.			REV
B	C-36A29-06-B			G
SCALE	1=1	SHEET 1 OF 1		